



JEEP ZJ WINCH MOUNT

Thank you for choosing Rough Country for all your Off Road needs.

Please read instructions before beginning installation. Check the kit hardware against the parts list. Be sure you have all needed parts and know where they go. Also please review tools needed list and make sure you have needed tools.

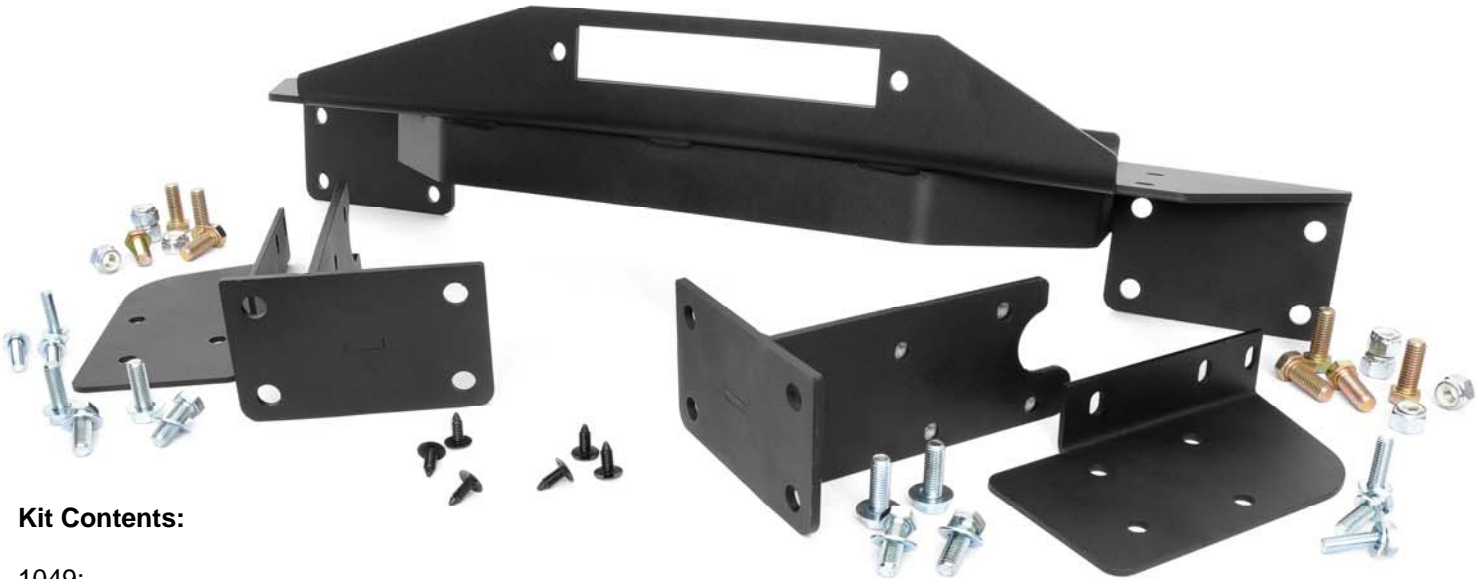
PRODUCT USE INFORMATION

Please read instructions before beginning installation. Check the kit hardware against the parts list and product layout. Be sure you have all needed parts and know where they go. Also please review tools needed list and make sure you have needed tools.

If questions exist we will be happy to answer any questions concerning the function and correct use of this product.

The installer must verify that the mounting kit does not interfere with the factory air bag sensors, which must not be relocated or modified in any way. The vehicles air bag system may not operate properly if the winch mounting kit is not mounted in compliance with the vehicle manufacturers recommendations.

Part # 1048-D-ring mount is also available. Please contact your Rough Country dealer to purchase.



Kit Contents:

1049:

Winch Plate
Dr Side Frame Bracket
Pass Side Frame Bracket
Dr Side Bracket Brace
Pass Side Bracket Brace

1049BAG1-

6-10mm x 35mm Bolts
6-10mm Flat Washers
8-12mm x 35mm Bolts
8-Flat Washers
8-9/16" x 1 1/2" Bolts
8-7/16" x 2 3/4" Bolts
6-Push Pins

Tools Needed:

Flat screwdriver
Phillips screwdriver
Pliers
Drill Motor
17/32" Drill Bit
Body saw
Tape
Tape Measure
13mm Socket / Wrench
15mm Socket / Wrench
16mm Socket / Wrench
17mm Socket / Wrench
19mm Socket / Wrench
22mm Socket / Wrench

INSTALLATION INSTRUCTIONS

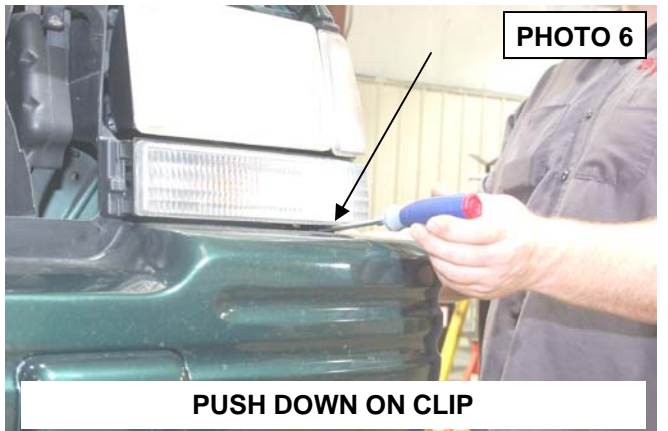
1. Raise hood and remove the 4 screws from grill. Retain the hardware for reuse. **See Photo 1.**
2. Remove the grill.



3. Remove the three push pins from bumper that were under grill. Retain hardware. **See Photo 3.**
4. Remove license plate if equipped.
5. Remove the six plastic rivets that attach the bumper to fender well. Retain hardware. **See Photo 4.**

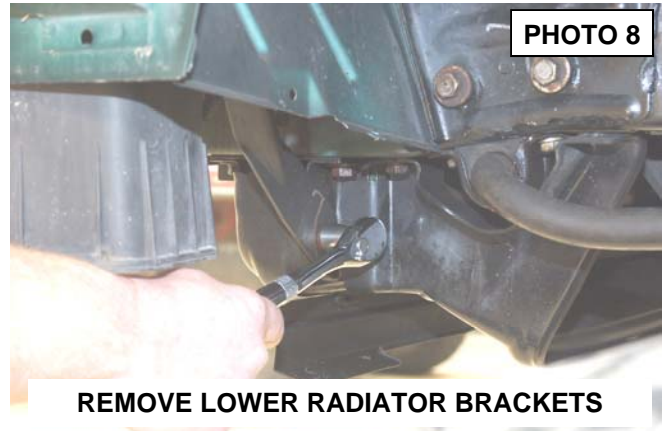
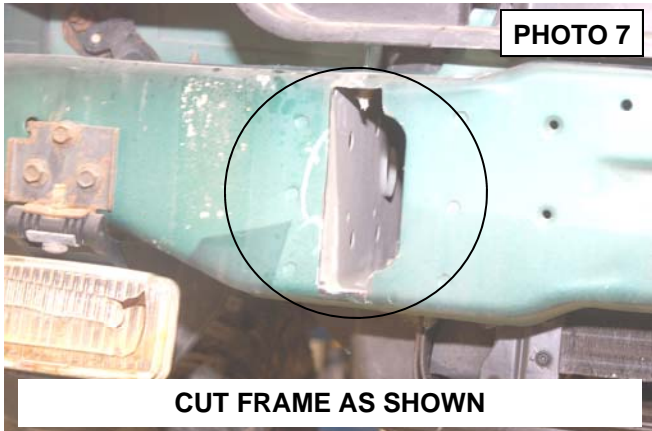


6. Remove the 3 push pin on bottom of bumper. Retain hardware. **See Photo 5.**
7. Using a screwdriver between headlight and bumper push down on clip and pull back on bumper and remove the bumper from the vehicle. **See Photo 6.**

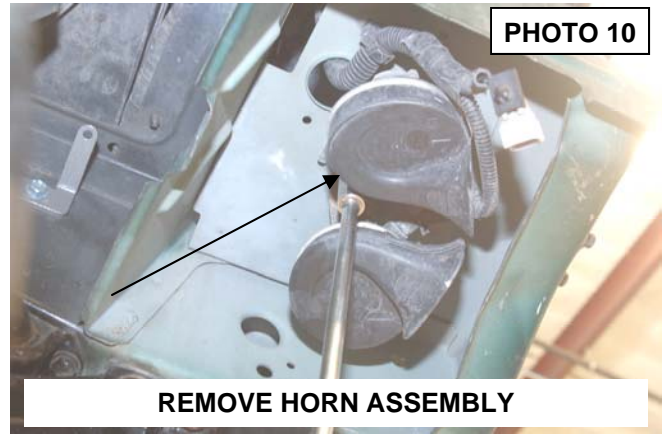
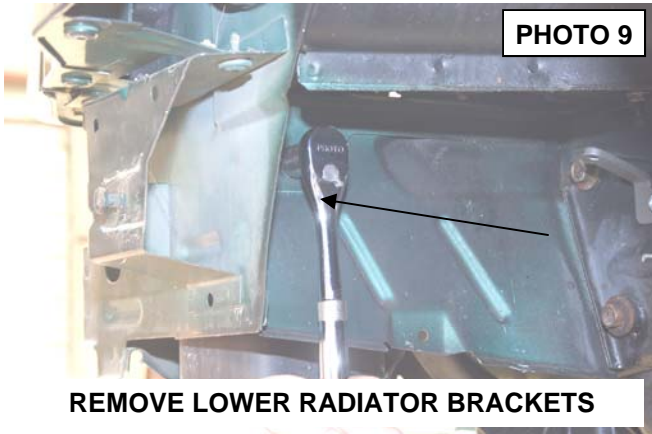


8. Remove bumper and fog lights if equipped.

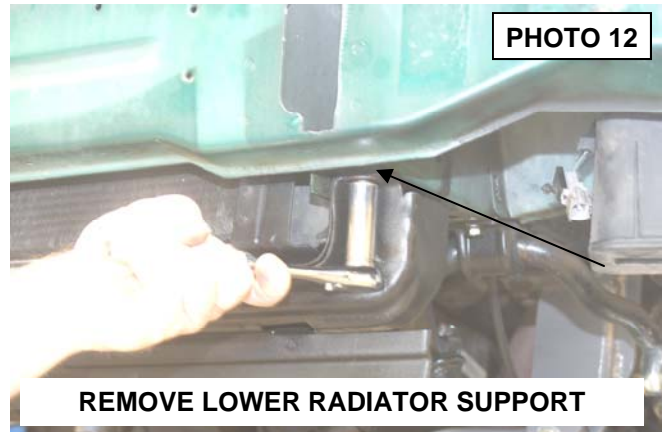
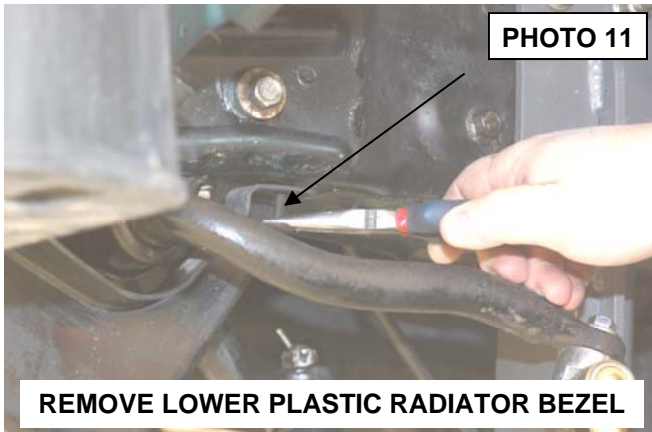
9. Using a body saw cut the outside edge of hole in bumper support. Cut only until you reach the side of frame. **See Photo 7.**
10. Test fit bracket and trim if necessary. New bracket will need to be flush against frame.
11. Using a 15mm socket remove the 3 bolts from lower radiator support side brackets on both sides of jeep. **See Photo 8 & 9.** Retain the hardware for reuse.



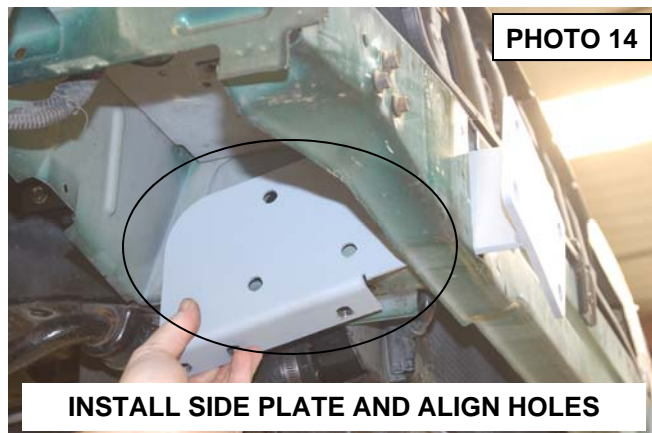
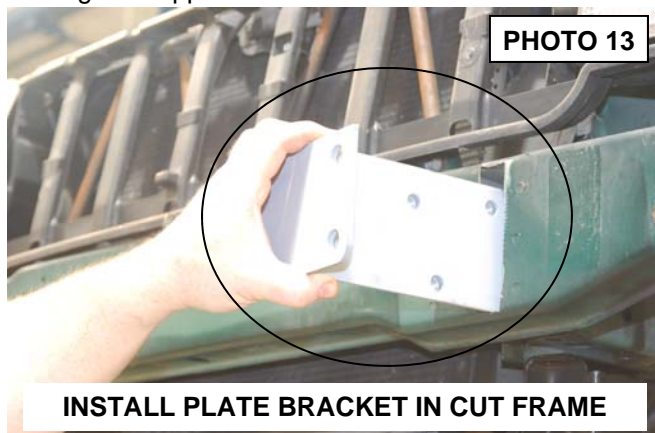
12. Using a 13mm socket remove horn assembly. Retain hardware for reuse. **See Photo 10.**



13. Using a 16mm socket and pliers remove the lower plastic radiator bezel. Retain hardware. **See Photo 11.**
14. Remove the two bolts from radiator core support. **See Photo 12.**
15. Remove bolts from only one side at a time.
16. Due to variances in year models, drill the four holes out on side of frame using 17/32 drill bit to make uniform.



17. Install winch bracket inside frame as shown in **Photo 13** then install outer winch support bracket on outside of frame using the supplied 12mm x 35mm bolts / washers on side.



18. Reinstall lower radiator bezel to the new frame brackets and secure with the supplied 10mm x 1.5 bolts / washers. **See Photo 15.**

19. Use a 17mm and 19mm socket to start bolts do not tighten at this time

20. Install winch plate using the supplied 9/16-1 1/2" bolts and nuts. **See Photo 16.** Use a 17mm and 19mm to tighten winch mounting bracket bolts first then a 22mm socket for winch plate bolts.

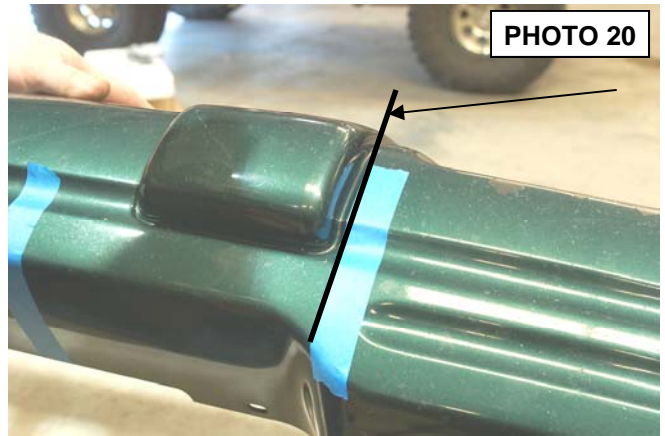
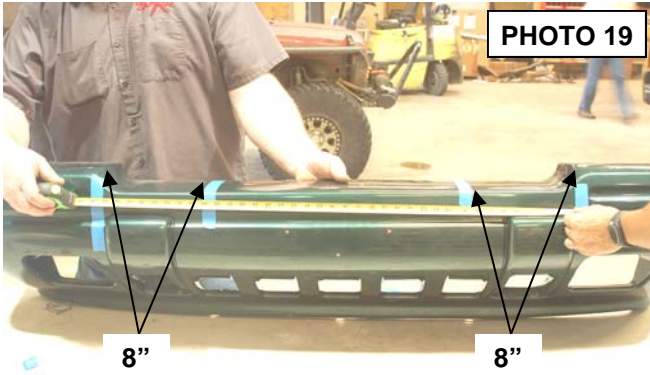


21. With bumper removed from jeep remove the two clips as shown in **Photo 17** and then remove styrofoam from the bumper as shown in **Photo 18**. The styrofoam will **not** be used.

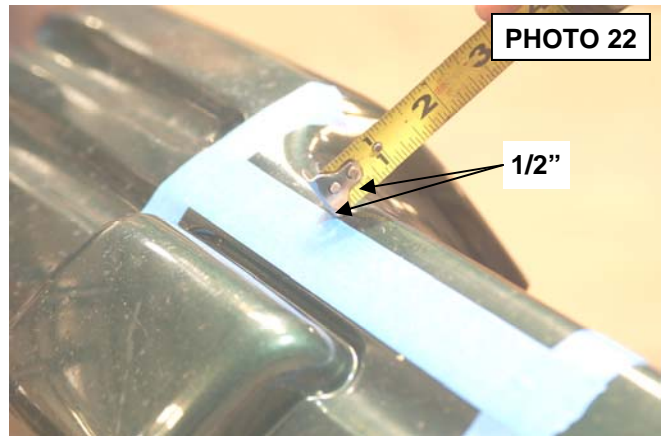
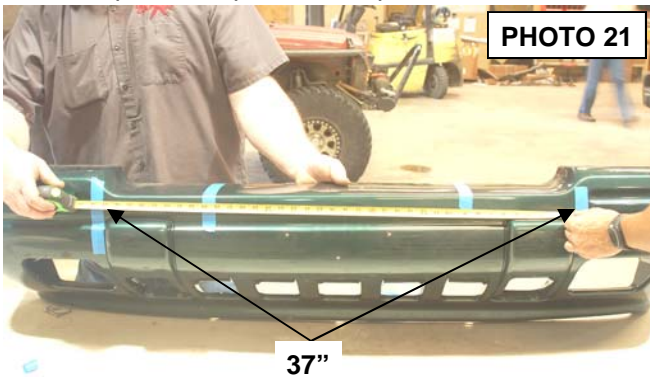


22. **Please read steps 23-32 for 96-98 ZJ and make sure to understand all cuts before performing any bumper cutting or modification.** Instructions for cutting 93-95 ZJ bumper follow these instructions.

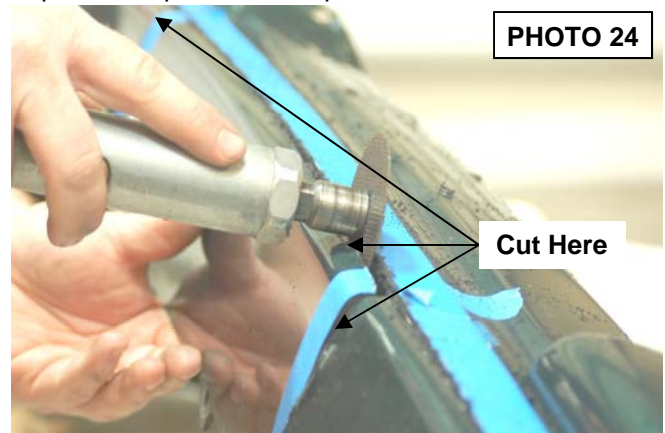
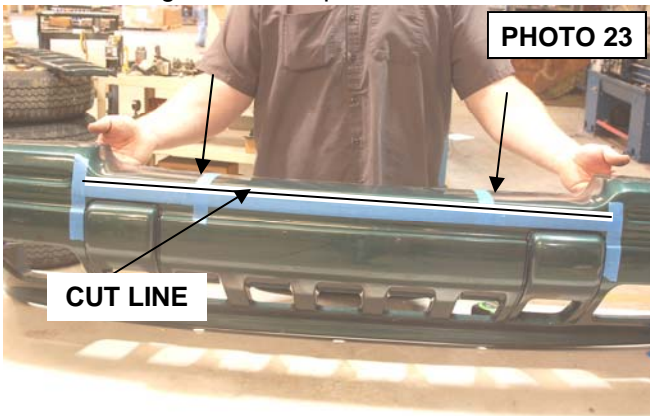
23. Measure 8" from the step on top of bumper on both sides and mark it. **See Photo 19.**
 24. Using tape, place a piece straight up with body line on outside of raised part of bumper on both sides. **See Photo 20.**



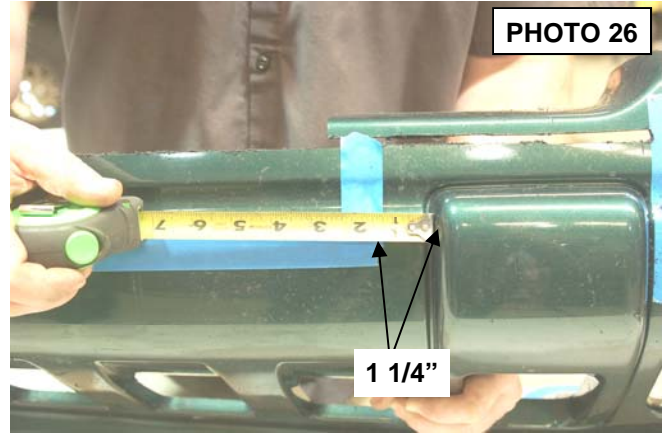
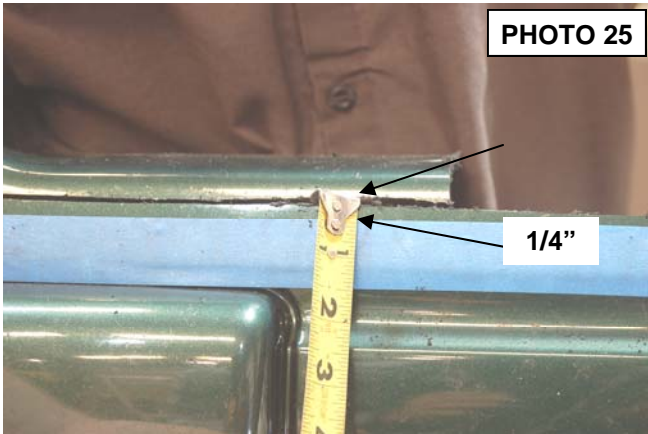
25. Measure between both pieces of tape it should be about 37 ". **See Photo 21.**
 26. Measure a 1/2" down from top of bumper. **See Photo 22.** Place tape even across to both pieces of tape placed on the bumper in the previous steps.



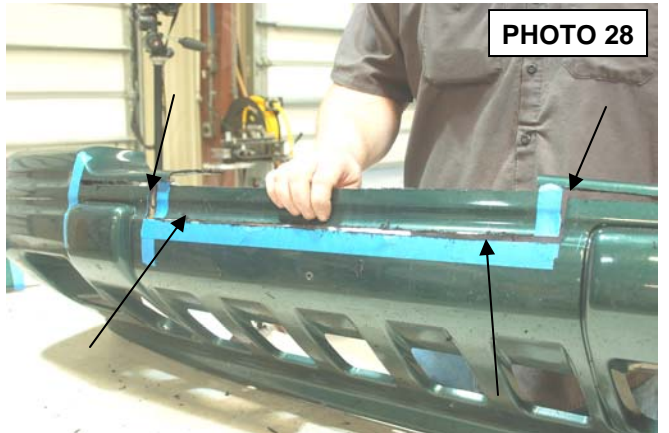
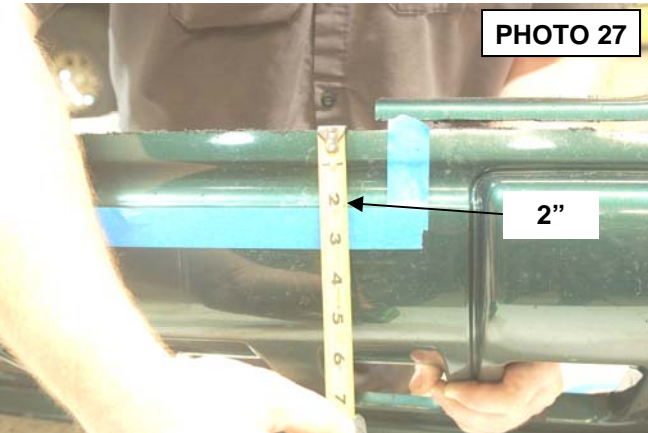
27. Cut bumper using cut off wheel or body saw be sure to cut on the outside as shown in **Photo 23** of the tape toward the outer edge of the bumper. Also cut across from outside of piece of tape to outside piece as shown in **Photo 24.**



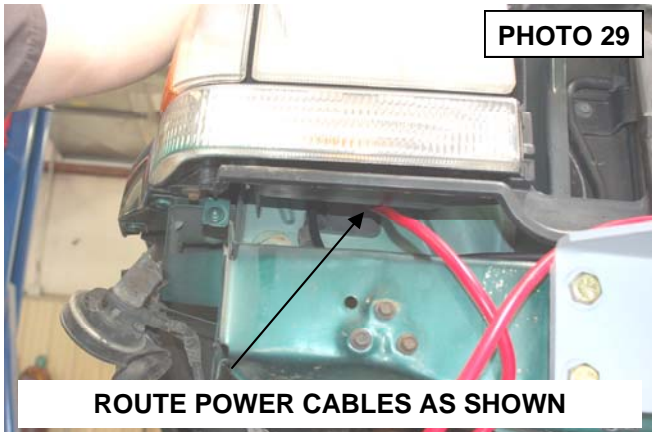
28. Remove tape that is going across bumper and measure 1/4" down as shown in **Photo 25** from cut and mark it. Cut the 1/4" from the bumper and remove.
29. Remove that piece of tape then measure 1 1/4" over from both sides of the raised locations in bumper and mark. **See Photo 26.**



30. Measure 2" down from cut area and mark. **See Photo 27.**
31. Cut this area off be sure to cut on the correct side of tape or line and remove. **See Photo 28.**
32. Remove tape and test fit bumper on the new winch plate and trim any areas as necessary.



33. Install your winch. Route the winch power wires through the hole under and behind the passenger side headlight and to the battery. **See Photo 29.**
34. Reinstall horn assembly using stock bolt. Use a 13mm to tighten. **See Photo 30.**



35. Reinstall lower radiator side brackets with stock bolts that were removed in Step 11 & 12. **See Photo 31.** Tighten using a 15mm wrench.
36. Reinstall bumper using stock push pins. Two pins up top and three across bottom. With the inner fender well on the out side of bumper install the supplied push pins into bumper. **See Photo 32.**
37. Reinstall grill and the four screws that were removed previously.



PHOTO 31

REINSTALL RADIATOR SUPPORTS



PHOTO 32

REINSTALL INNER FENDER

93-95 YEAR MODEL BUMPER TRIMMING INSTRUCTIONS

1. Remove the foam from the bumper. Measure 1/2" up and mark from raised location on the passenger side to the raised location driver side. **See Photo 1.**
2. Measure over from the driver and passenger raised location and mark. **See Photo 2.**

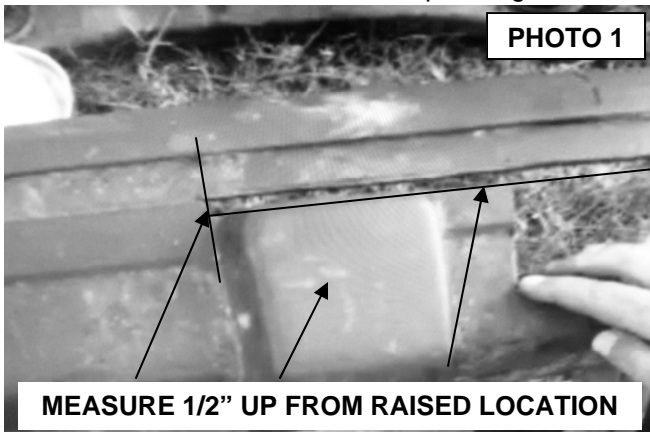


PHOTO 1

MEASURE 1/2" UP FROM RAISED LOCATION

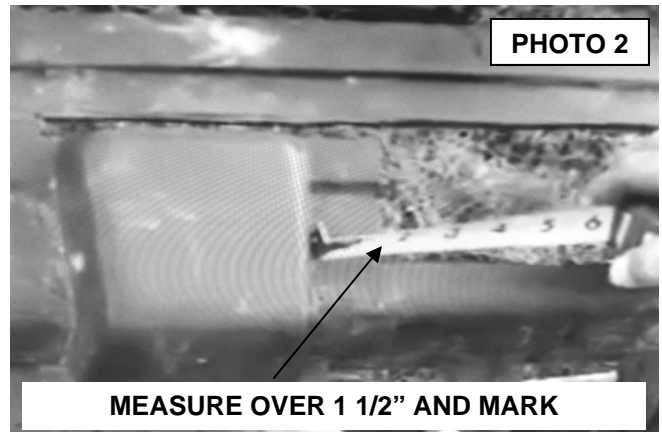


PHOTO 2

MEASURE OVER 1 1/2" AND MARK

3. Measure down from the first cut 3" and mark. **See Photo 3.**
4. Cut the bumper cover using a cut off wheel or reciprocating saw.
5. Reinstall on the vehicle with the factory hardware.
6. Install the winch per the winch installation instructions.

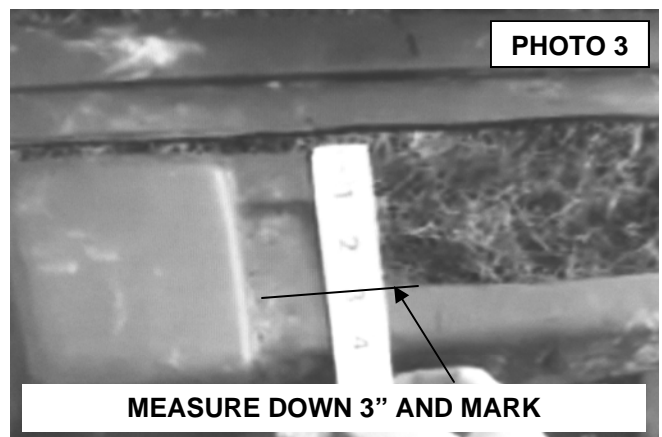


PHOTO 3

MEASURE DOWN 3" AND MARK

OPTIONAL D-RING MOUNT KIT PART # 1048 INSTALLATION INSTRUCTIONS

1. Remove the foam from the bumper. Measure 1/2" up and mark from raised Location on the passenger side to the raised location driver side. Cut from outside to outside of each location. **See Photo 1.**



MAINTENANCE INFORMATION

1. Failure to securely tighten all bolts on the winch plate, winch, and fairlead can result in product failure, which may result in vehicle damage or operator injury. Check that all bolts are securely tightened prior to use.
2. Inspect all nuts and bolts on the winch, winch mount, and related hardware prior to each use. Tighten all nuts that appear to be loose. Stripped, fractured, or bent bolts or nuts should be replaced.
3. Periodically check bolt for tightness.

OPTIONAL ACCESSORIES FOR ZJ WINCH PLATE CALL YOUR ROUGH COUNTRY DEALER TO ORDER



WINCH COVER

PART # RS110 SYNTHETIC ROPE



**ROUGH COUNTRY ELECTRIC WINCH
AVAILABLE IN 9500LB & 12000LB**



PART # 1048 ZJ D-RING KIT



**PART # RS120 WINCH
EXTENSION STRAP**

THANK YOU FOR CHOOSING ROUGH COUNTRY FOR YOUR OFF ROAD NEEDS.

**ROUGH
COUNTRY**
SUSPENSION SYSTEMS